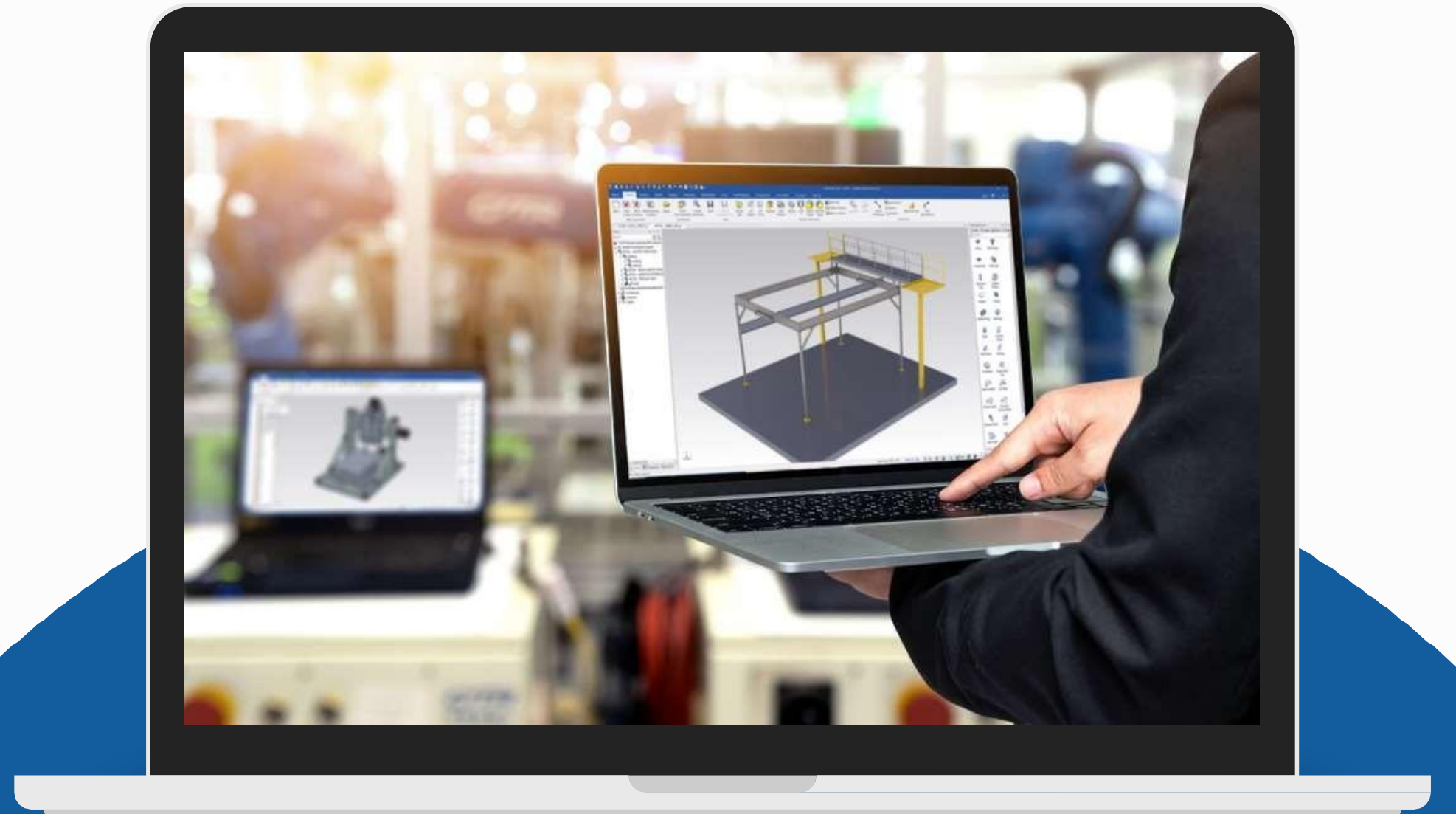
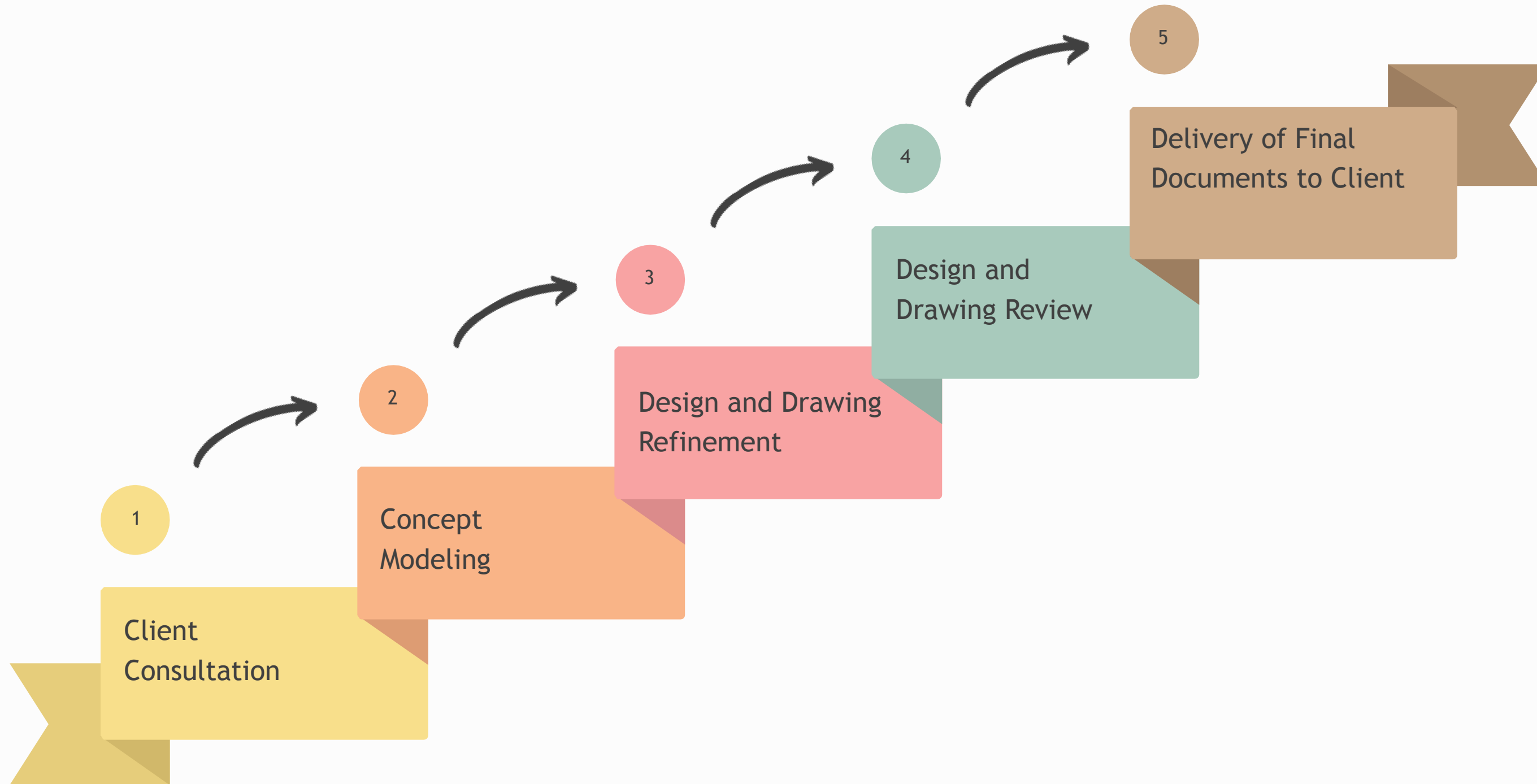




# Sheet Metal Furniture Design Services

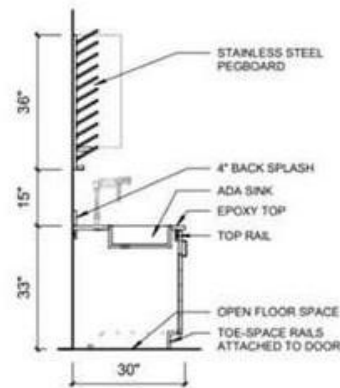


# Work-flow



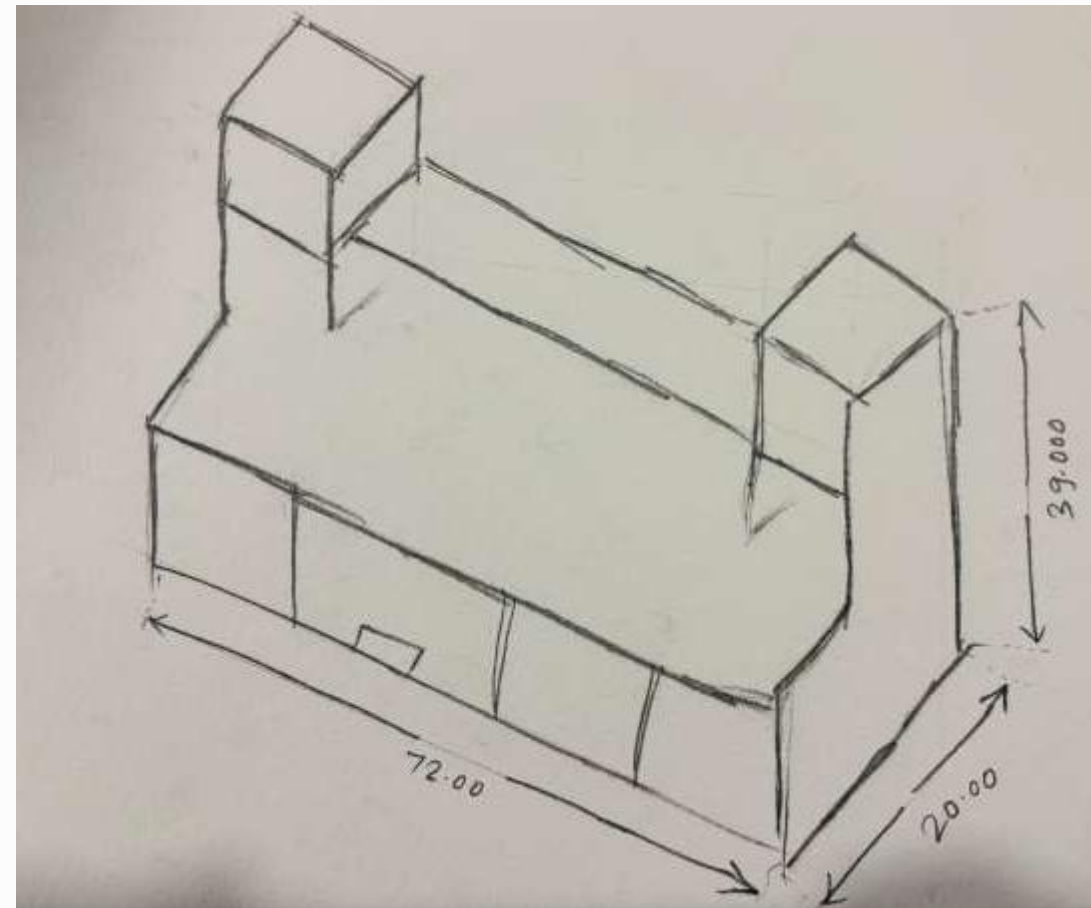
# What we get from Clients?

NOTES ON CU22727-SINK-323622-W  
1. ADA CABINET TO HAVE DOUBLE DOORS  
TO HIDE A POU NEUTRALIZATION TANK.  
2. DOORS TO HAVE A BUILT IN TOEKICK.  
3. OPEN TO FLOOR (NO CABINET BOTTOM)

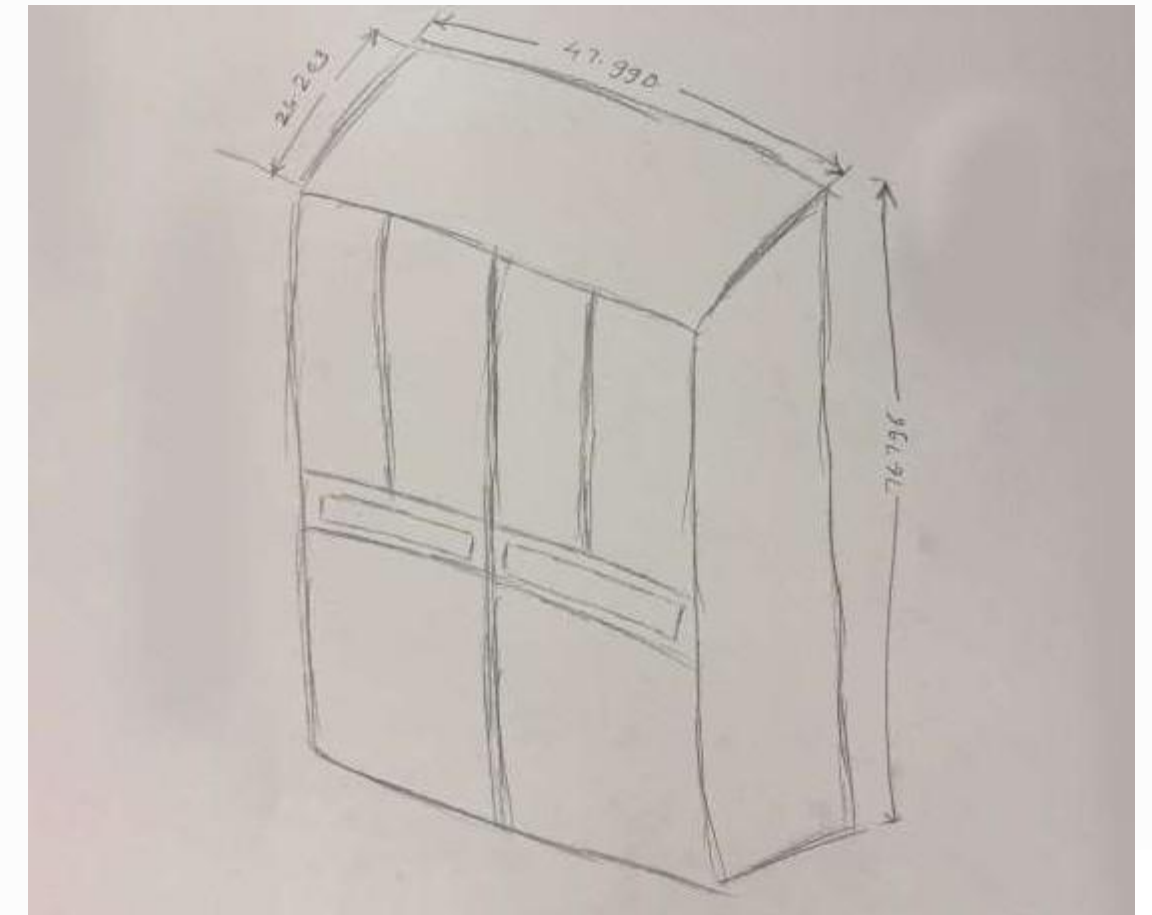


4 ADA SINK SECTION  
1/2" = 1'-0"

**Input for Stainless Steel Sink Cabinet**



**Input for Stainless Steel Wall Cabinet**

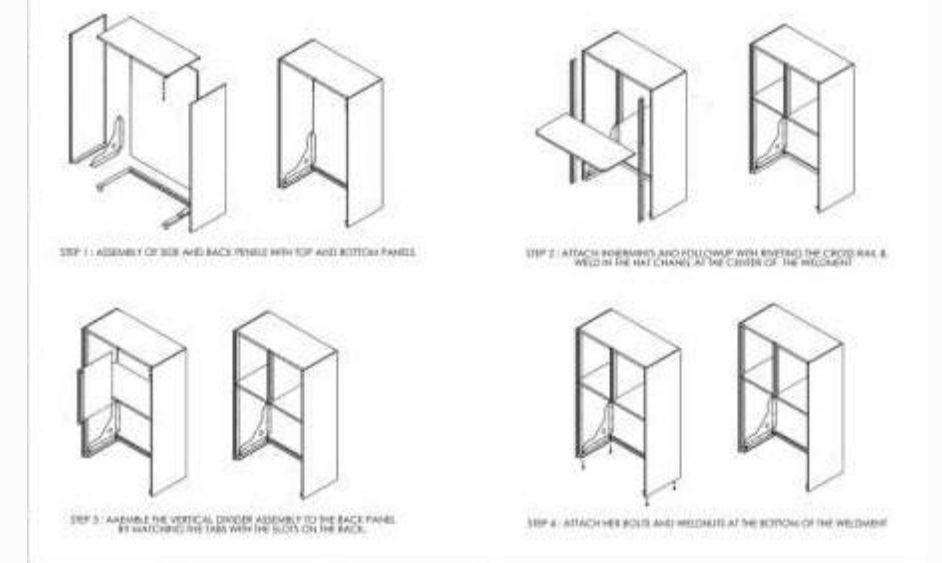
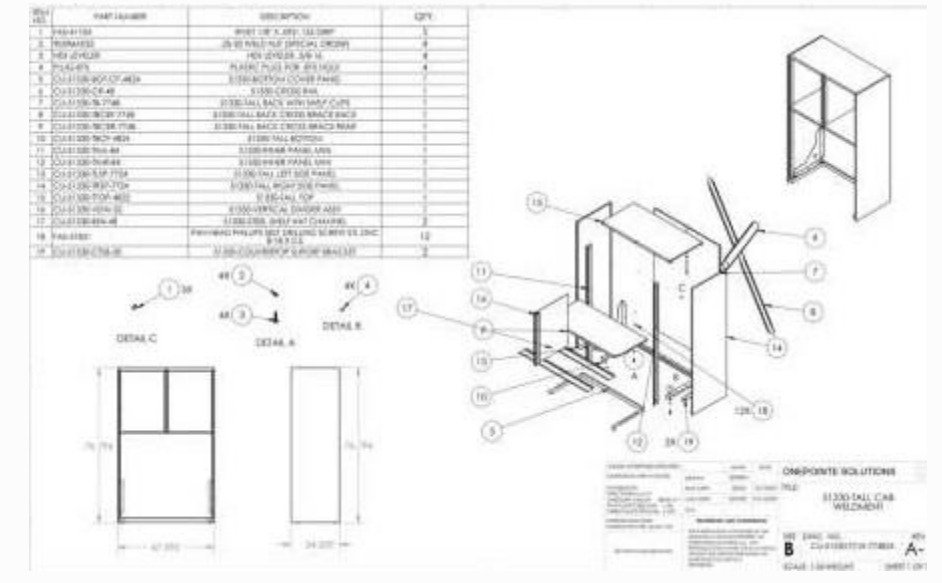
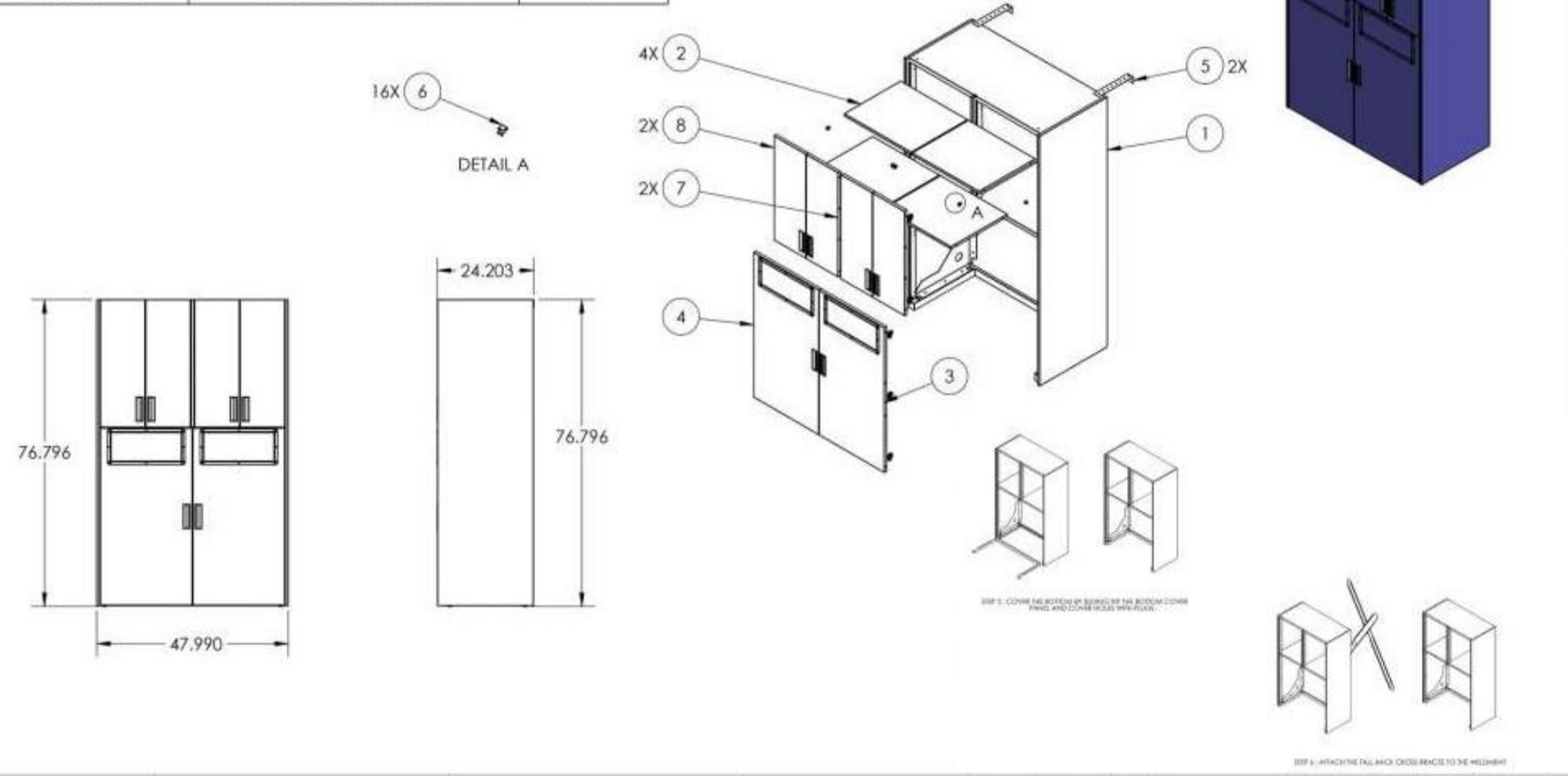


**Input for Stainless Steel Tall Cabinet**



# Stainless Steel Tall Cabinet

ITEM NO.	PART NUMBER	DESCRIPTION	QTY.
1	CU-51330-TCW-774824	51330-TALL CAB WELDMENT	1
2	CU-51330-SH-2424	51330-SHELF	4
3	CU-51330-TDA-4524RD	51330-TALL DOOR ASSEMBLY	1
4	CU-51330-TDA-4524LD	51330-TALL DOOR ASSEMBLY	1
5	TCWT-12	TALL CASE WALL TIE	2
6	HAF-256 2C	SHELF CLIP - Z	16
7	CU-51330-TDA-3212RD	51330-TALL DOOR ASSEMBLY	2
8	CU-51330-TDA-3212LD	51330-TALL DOOR ASSEMBLY	2

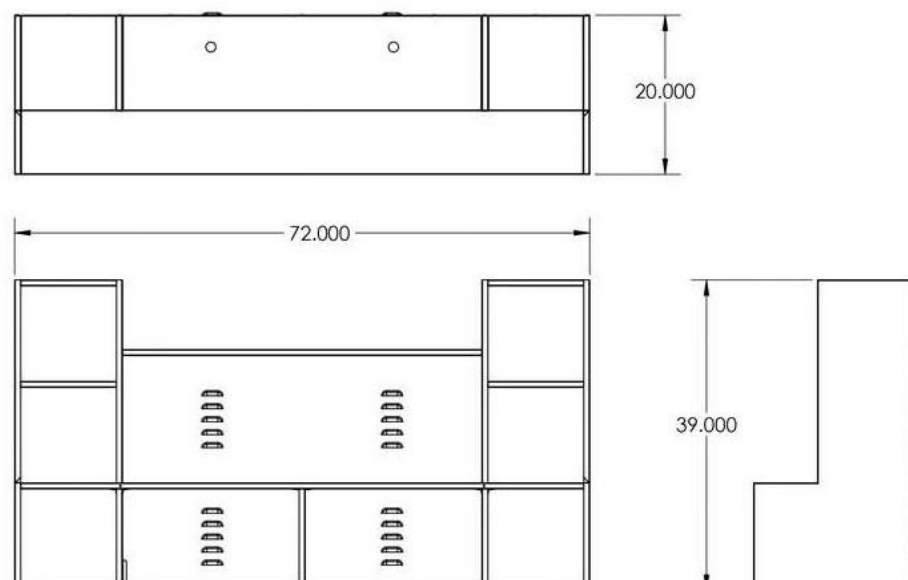


# Stainless Steel Wall Cabinet

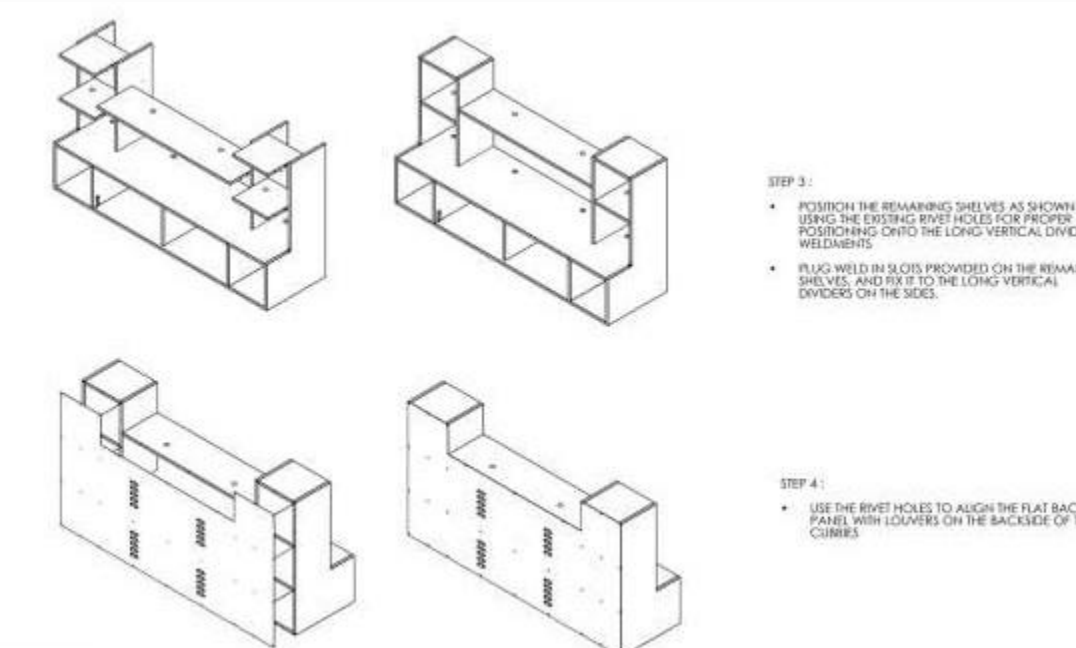
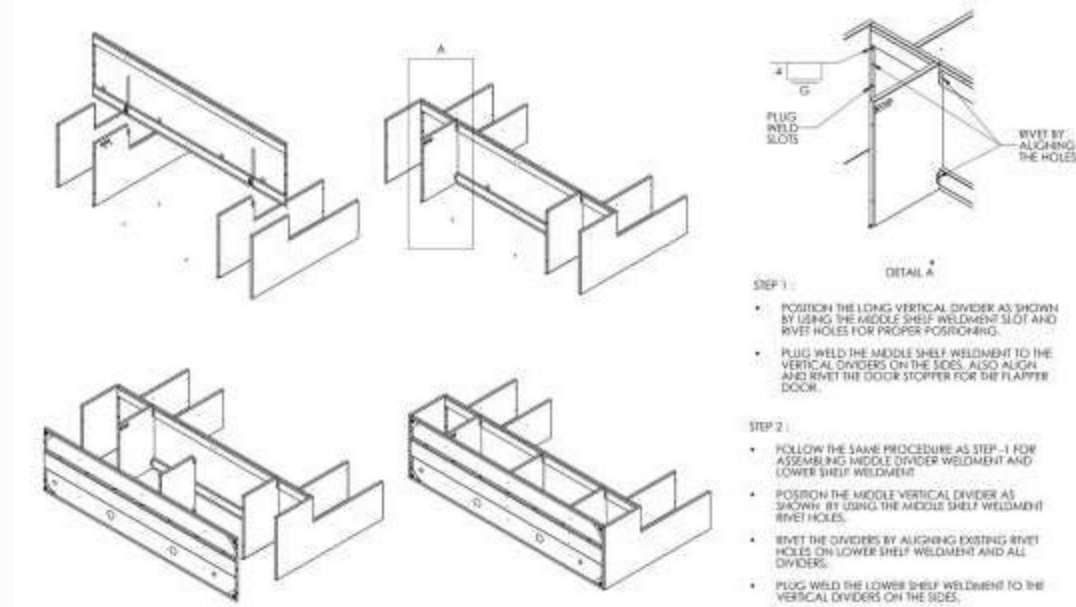
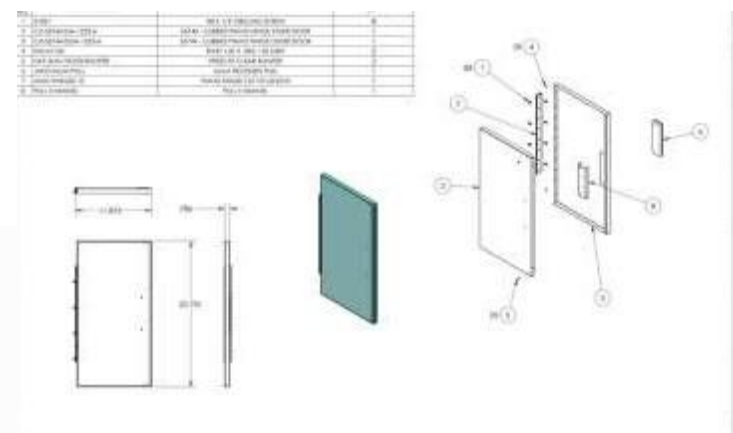
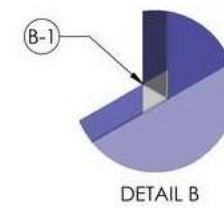
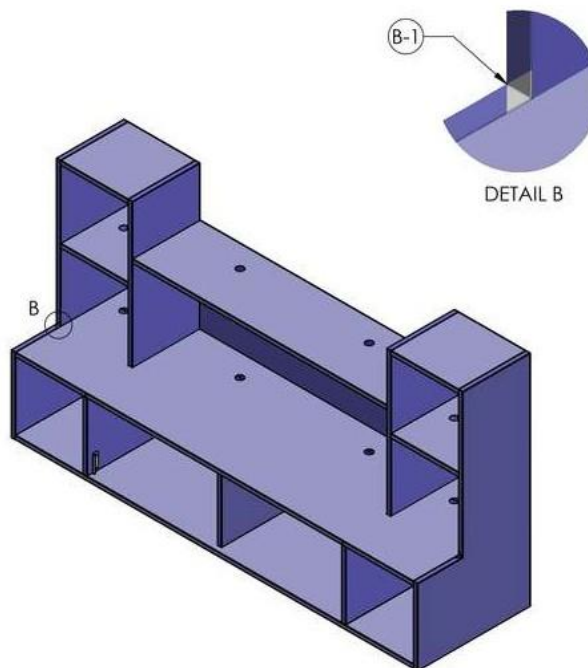
ITEM NO.	DESCRIPTION	QTY
1	CU-55744-CUBBIES-BF-0772	1
2	CU-55744-FDS-03	1
3	CU-55744-LSW-7220	1
4	CU-55744-MSW-7220	1
5	CU-55744-MVDW-1320	1
6	CU-55744-TS-1212-001	2
7	CU-55744-TS-1212-002	2
8	CU-55744-TSW-4512	1
9	CU-55744-VDW-3920-001	1
10	CU-55744-VDW-3920-002	1
11	CU-55744-VMDW-3920-001	1
12	CU-55744-VMDW-3920-002	1
13	FAS-0125879	82

**NOTES:**

- REFER SHEET 2 FOR EXPLODED VIEW
- REFER SHEET 3 & 4 FOR ASSEMBLY WELDMENT INSTRUCTIONS.

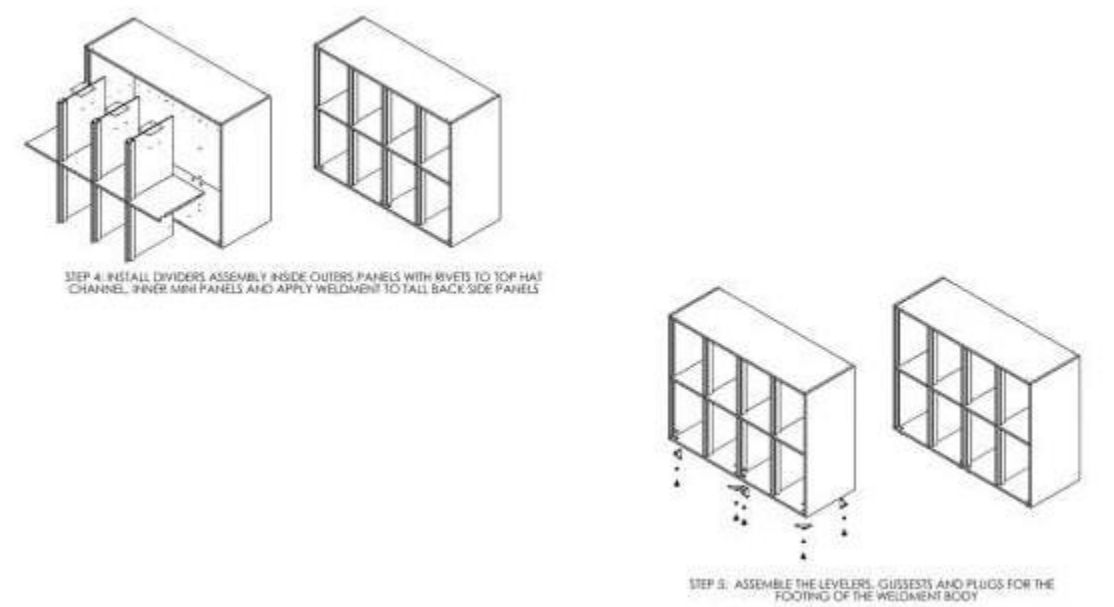
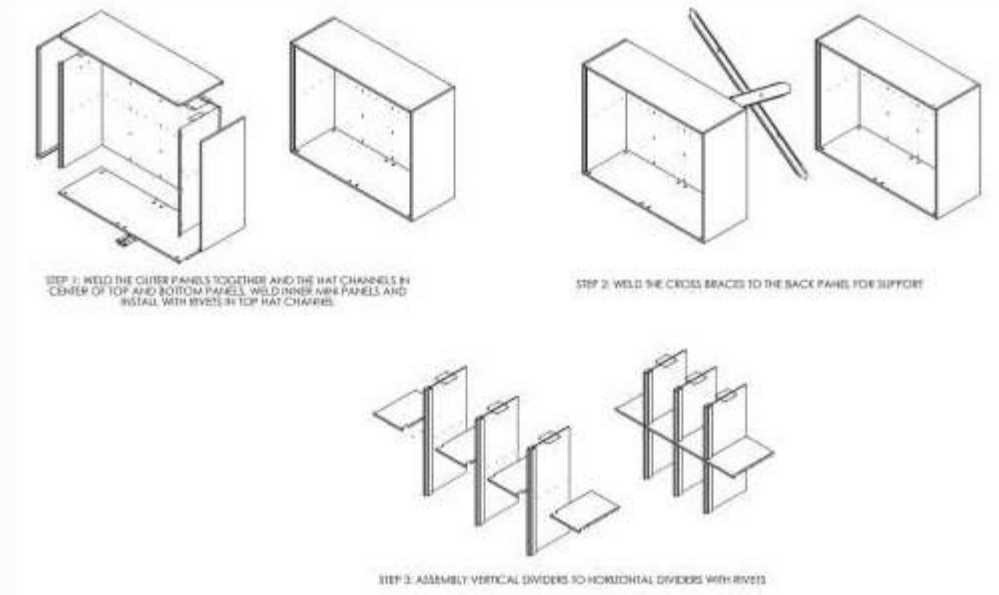
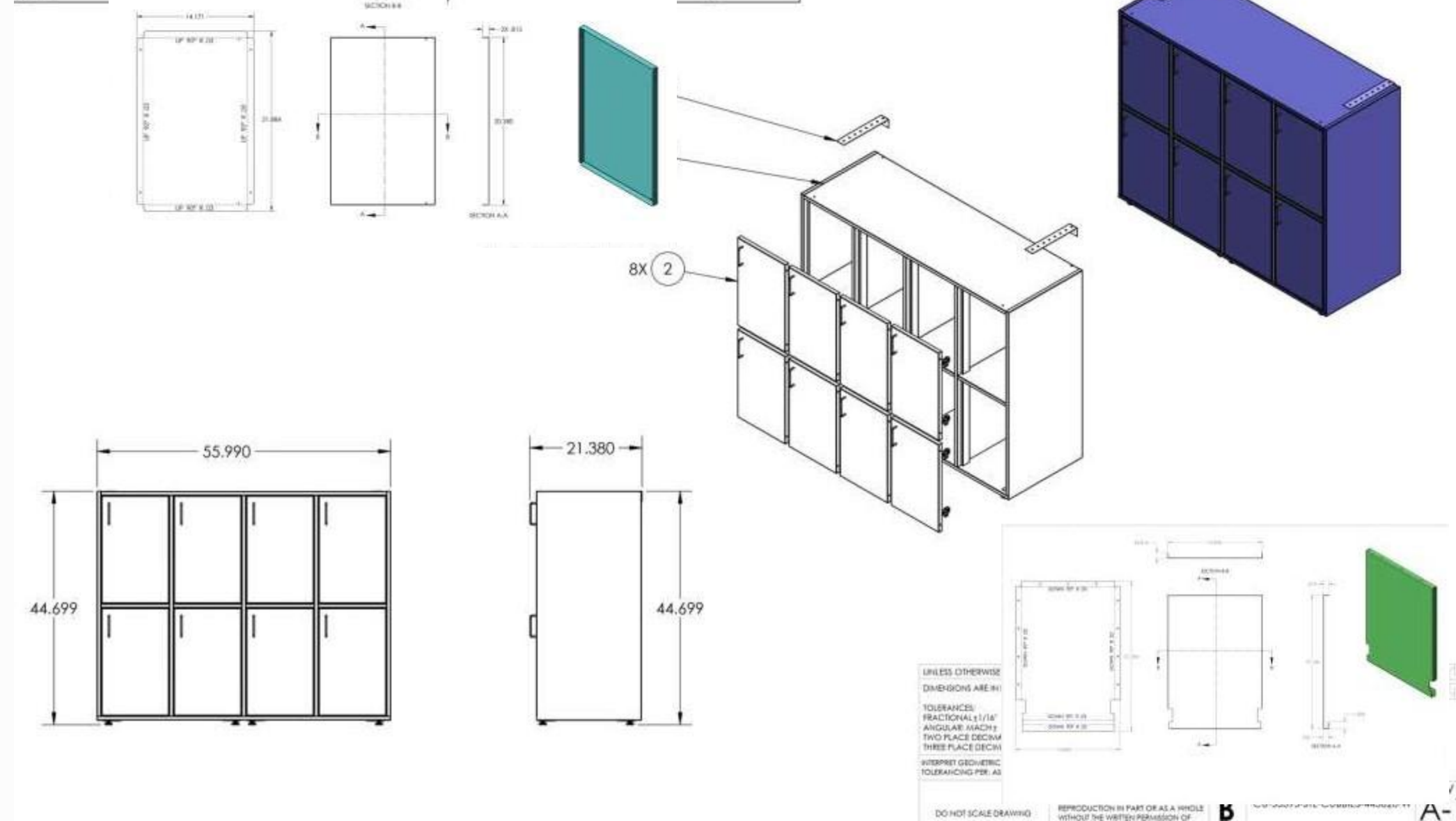


LEVEL	REV.	DESCRIPTION	DATE	APPROVED
D2	B-1	SEE ECO-1806	22-08-2024	



# Stainless Steel Cabinet

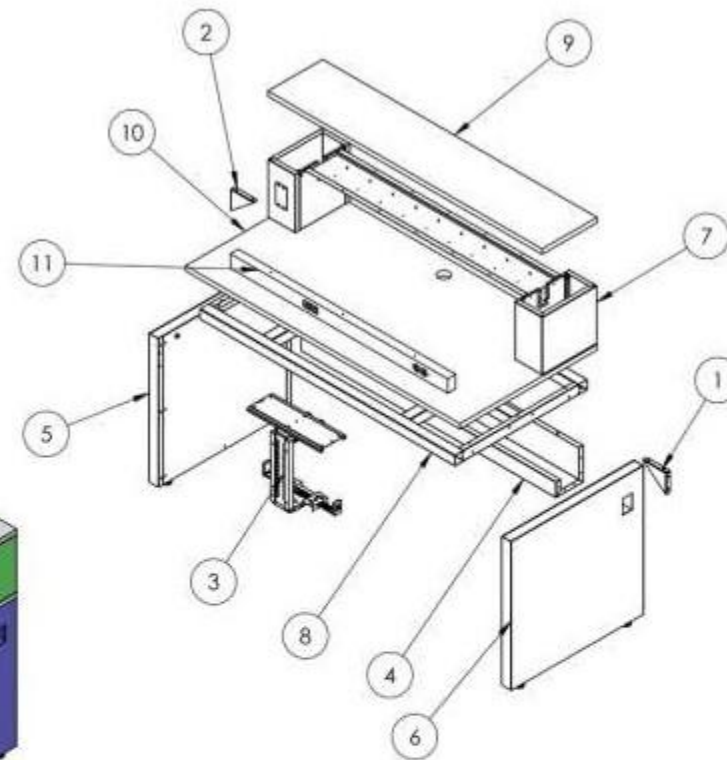
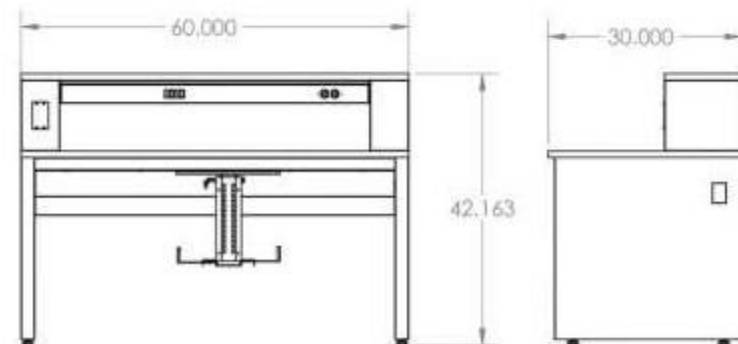
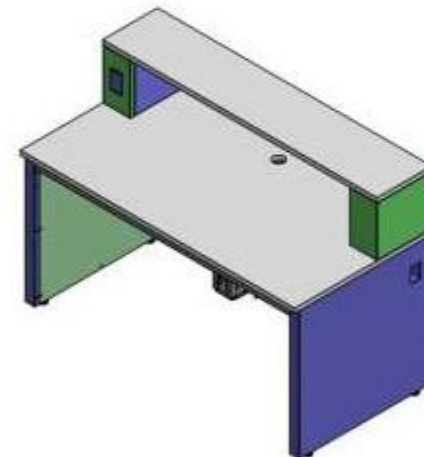
PART NUMBER	DESCRIPTION	QTY.
U-53395-TCW-445A20	53395-TALL CAB W/10 DIVERT WITH OLT TOPRICK	1
U-53395-TDW-11		8
WT-12		2



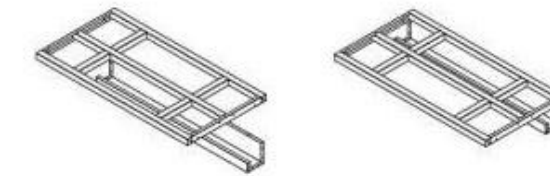
# Stainless Steel Work Desk

ITEM NO.	PART NUMBER	DESCRIPTION	QTY.
1	25356-END PANEL GUSSET	25356-END PANEL GUSSET	1
2	25356-END PANEL GUSSET LEFT	25356-END PANEL GUSSET	1
3	CPU HOLDER	CPU HOLDER	1
4	CU-25356-CABLE MANAGEMENT TRAY	25356 - CABLE MANAGEMENT TRAY ASSY	1
5	CU-25356-EPNL-2929-F	25356-END PANEL	1
6	CU-25356-EPNL-2929-R	25356-END PANEL WITH CABLE MANAGEMENT TRAY CUT-OUT RIGHT	1
7	CU-51917-RSS-126012-002	51917-REAGENT SHELVING SYSTEM WITH 7FLEX	1
8	CU-51917-WMT-025629	51917-2 INCH APRON	1
9	PRL1.0 : 60x12 G-002	PHENOLIC RESIN LAB GRADE 1.0 GRAY	1
10	PRL1.0 : 60x30 G-001	PHENOLIC RESIN LAB GRADE 1.0 GRAY	1
11	RW130-A6-L	FLEX PG RACEWAY	1

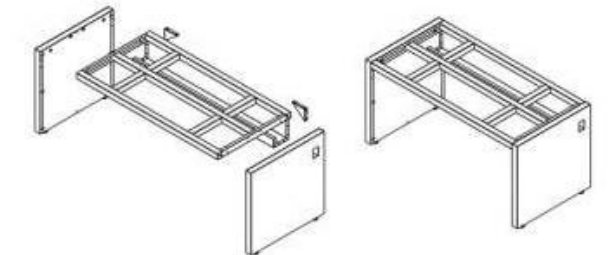
NOTES:  
1. RACEWAYS IS ATTACHED TO HAT CHANNEL.



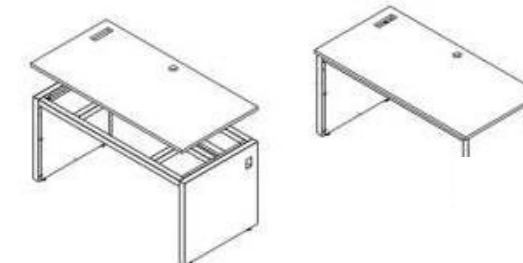
UNLESS OTHERWISE SPECIFIED: DIMENSIONS ARE IN INCHES	NAME	DATE	ONEPOINT SOLUTIONS
TOLERANCES: FRACTIONAL ± 1/16" ANGULAR: MACH ± .01" TWO PLACE DECIMAL ± .04" THREE PLACE DECIMAL ± .030	DRWNG		TITLE: XXXX
INTERPRET GEOMETRIC TOLERANCING PER: ASME Y14.5	ENG APPE		SIZE DWG. NO. BCU-24919-APRON WITH RSS ASSY
DO NOT SCALE DRAWING	MFG APPE		REV A-1
	Q.A.		SCALE: 1:16 WEIGHT: SHEET 1 OF 2



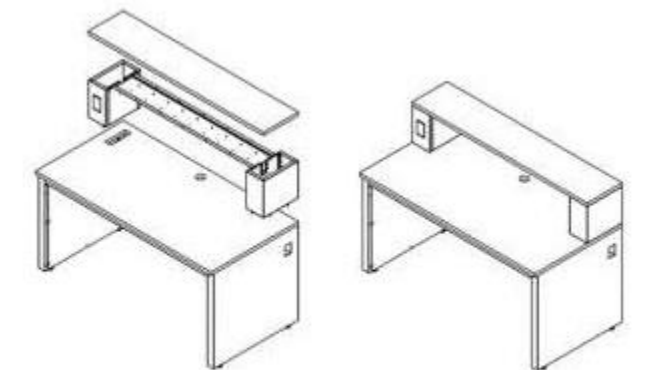
STEP - 1 CABLE MANAGEMENT TRAY IS ASSEMBLED WITH APRON USING SELF TAPPING SCREW.



STEP - 2 END PANEL ASSEMBLED TO THE SIDES USING RIVNUTS AND GUSSETS ATTACHED TO THE APRON AND END PANEL.



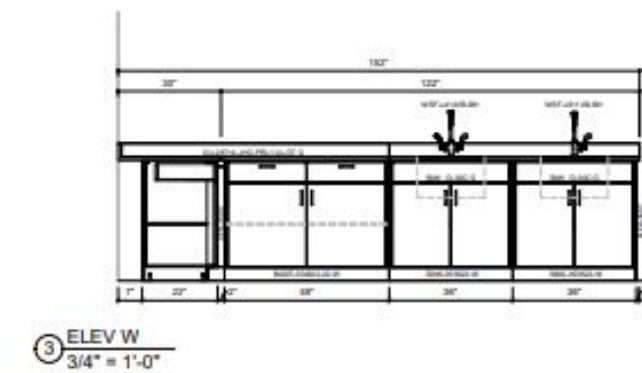
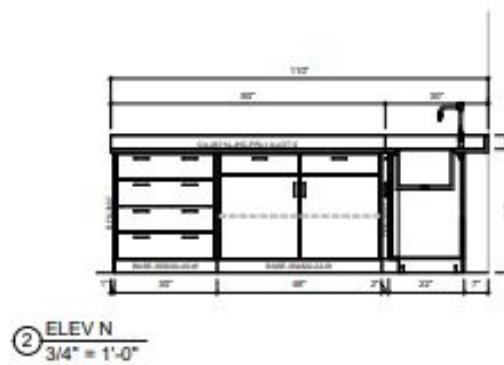
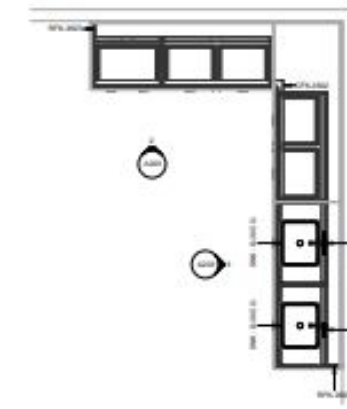
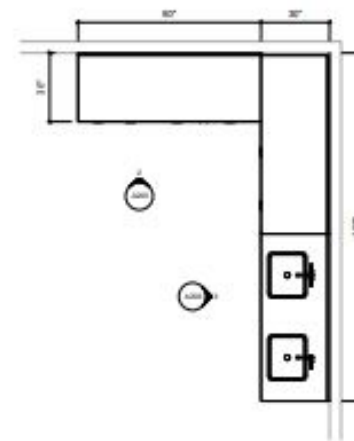
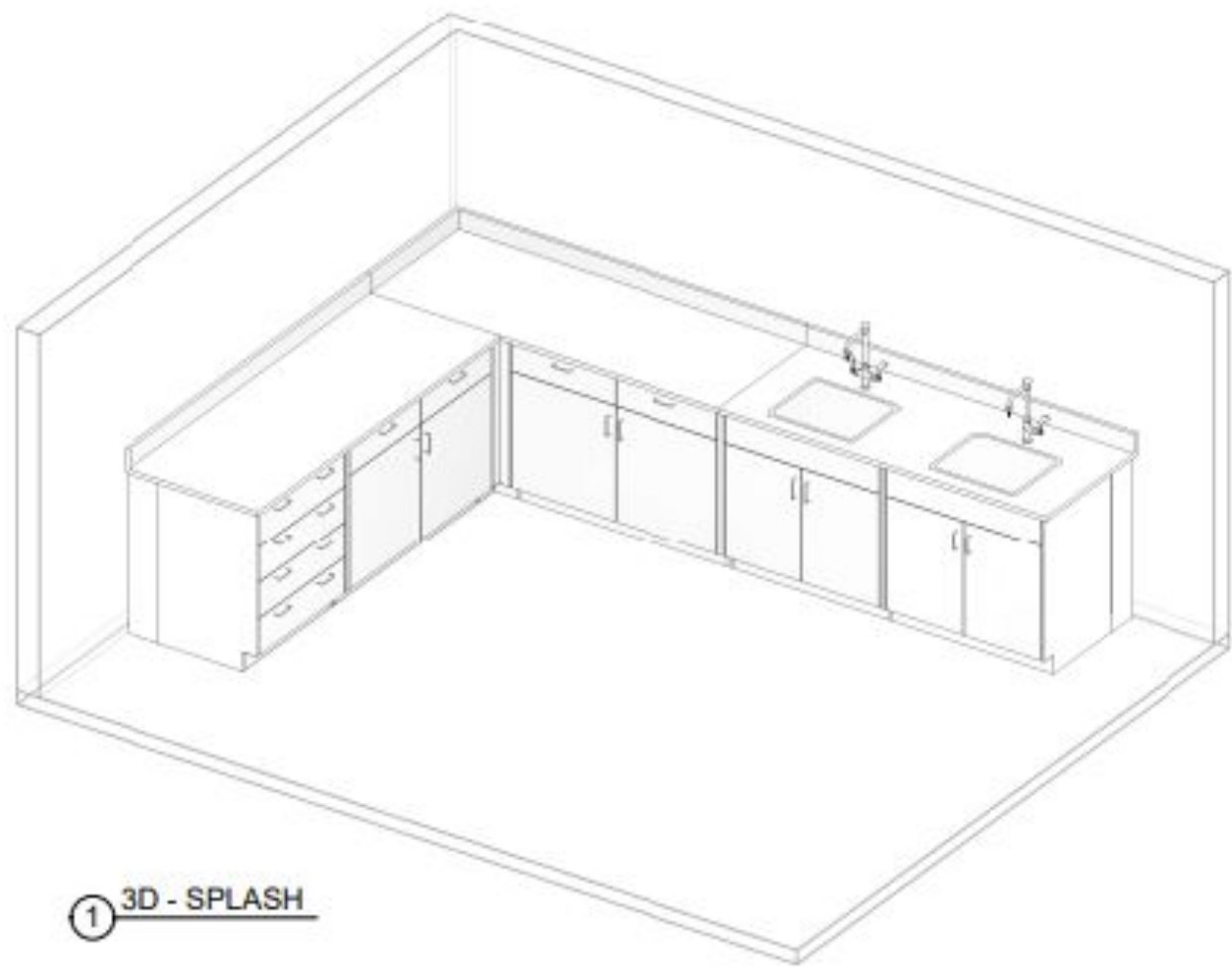
STEP - 3 ADD THE TOP TO THE ASSEMBLED BODY.



STEP - 4 ADD THE RSS ON TOP OF THE ASSEMBLED BODY AND RSS TOP ADD ON RSS BODY.

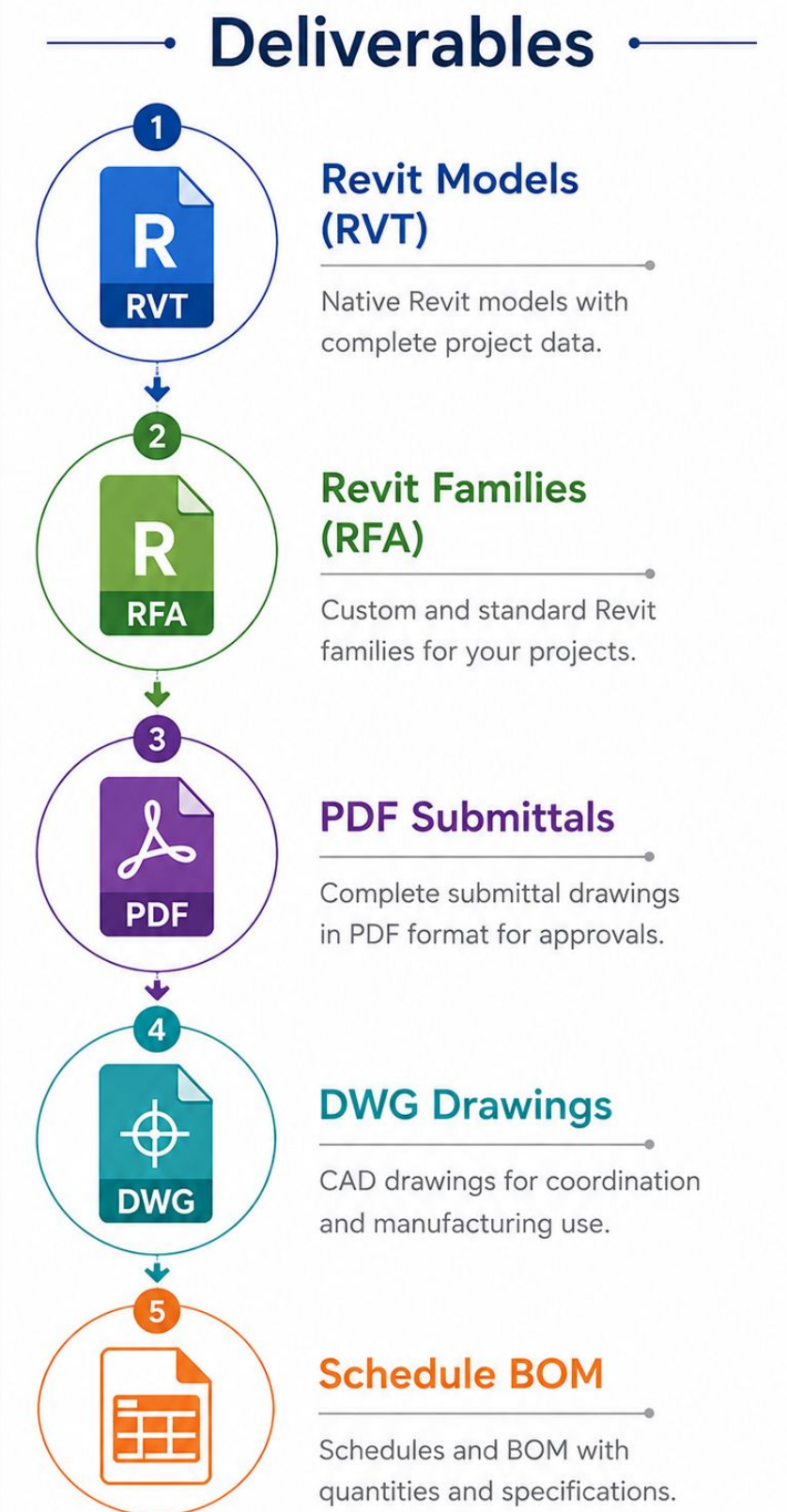
# Accurate Approval Drawings for Bids, RFQs & Client Reviews.

We create professional Revit-based submittal packages that help manufacturers present their products with complete layout, installation, and specification details for faster approvals.



# What we provide for RFQs?

- **Floor Plan Views** : Furniture layouts with dimensions and product placement.
- **3D Isometric Views**: Visual representations for design review and client approval.
- **Elevation Views**: Front, side, and sectional elevations with detailed dimensions.
- **Top Drawings**: Countertop layouts, cutouts, and equipment positioning.
- **Installation Drawings**: Installation layouts with reference dimensions and assembly details.
- **Schedule BOM (Bill of Materials)**: Product schedules, quantities, specifications, and component details.
- **Hardware & Product Specifications**: Hardware details and manufacturer specification sheets integrated into the submittal package.

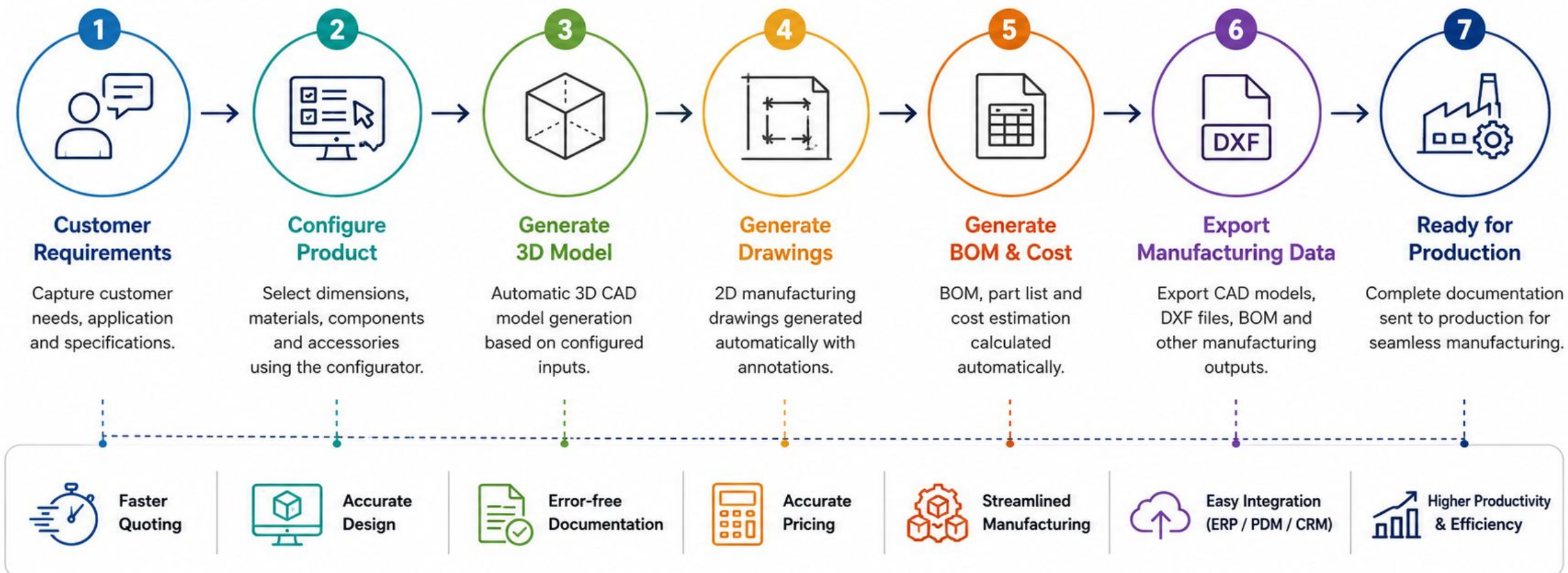


# CPQ & Product Configurator Solutions

We develop custom CPQ and engineering configurators for sheet metal manufacturers to automate repetitive design and quotation processes.








## CPQ & Product Configurator – End to End Process Flow

Configure. Quote. Design. Manufacture.



# CPQ & Product Configurator Solutions

## Capabilities

-  Product Configuration
-  Automatic CAD Model Generation
-  Drawing Automation
-  BOM Generation
-  DXF Generation
-  Cost & Quote Automation
-  ERP / PDM Integration

## Industries Served



Sheet Metal Furniture



Electrical Enclosures



Control Panels



Cabinets



Storage Systems



Workstations



Industrial Equipment

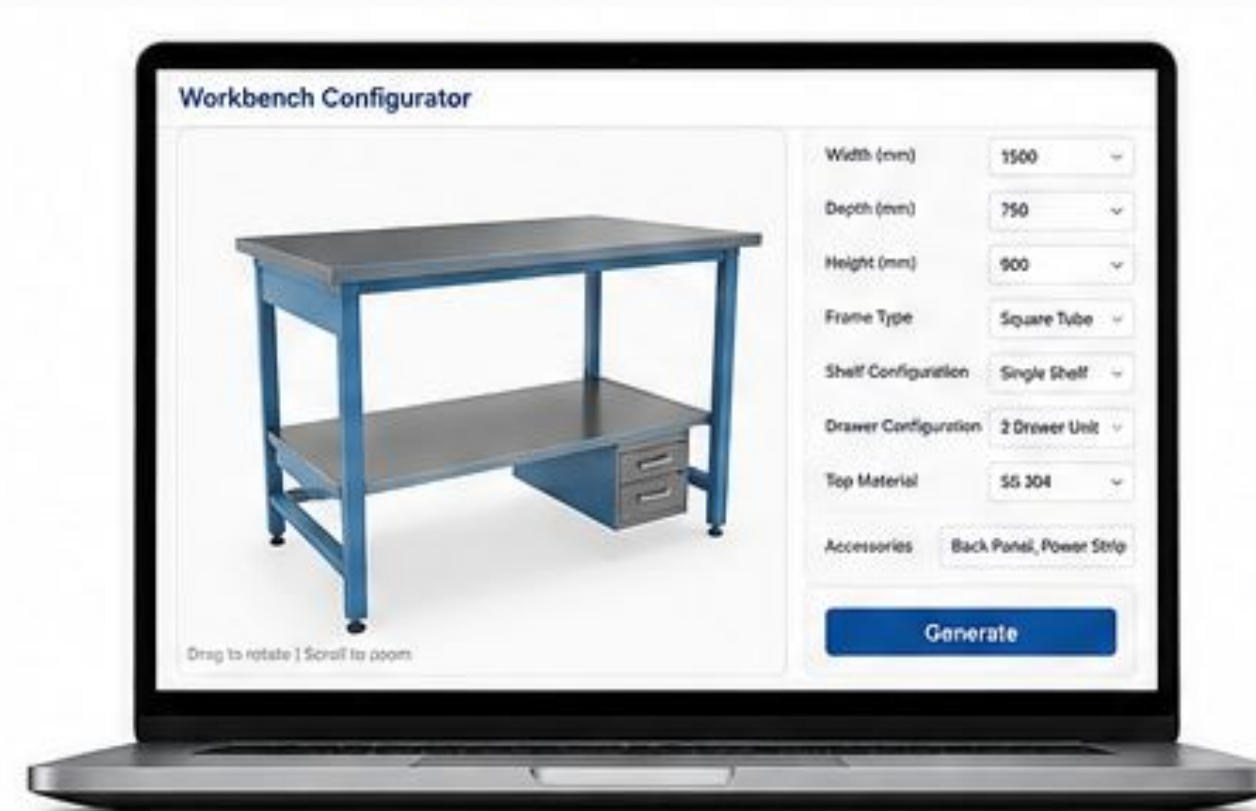


Custom Fabricated Products

# Workbench Configurator Developed by Immersiv Techsphere

## User Configurable Parameters

- ✓ Width
- ✓ Depth
- ✓ Height
- ✓ Frame Type
- ✓ Shelf Configuration
- ✓ Drawer Configuration
- ✓ Material Selection
- ✓ Accessories



## Benefits



Reduced  
Engineering  
Effort



Faster  
Quotation  
Process



Standardized  
Product  
Design



Error-free  
Manufacturing  
Documentation

## Automated Outputs



SolidWorks Models



Manufacturing Drawings



DXF Files



Production BOM



Assembly Documentation



Quotation Data

## Example Configurations Generated Instantly



### From Hours to Minutes

Generate complete manufacturing documentation with a few clicks.

### Before vs After Automation

Traditional Design Process



2 – 4 Hours  
Per Workbench

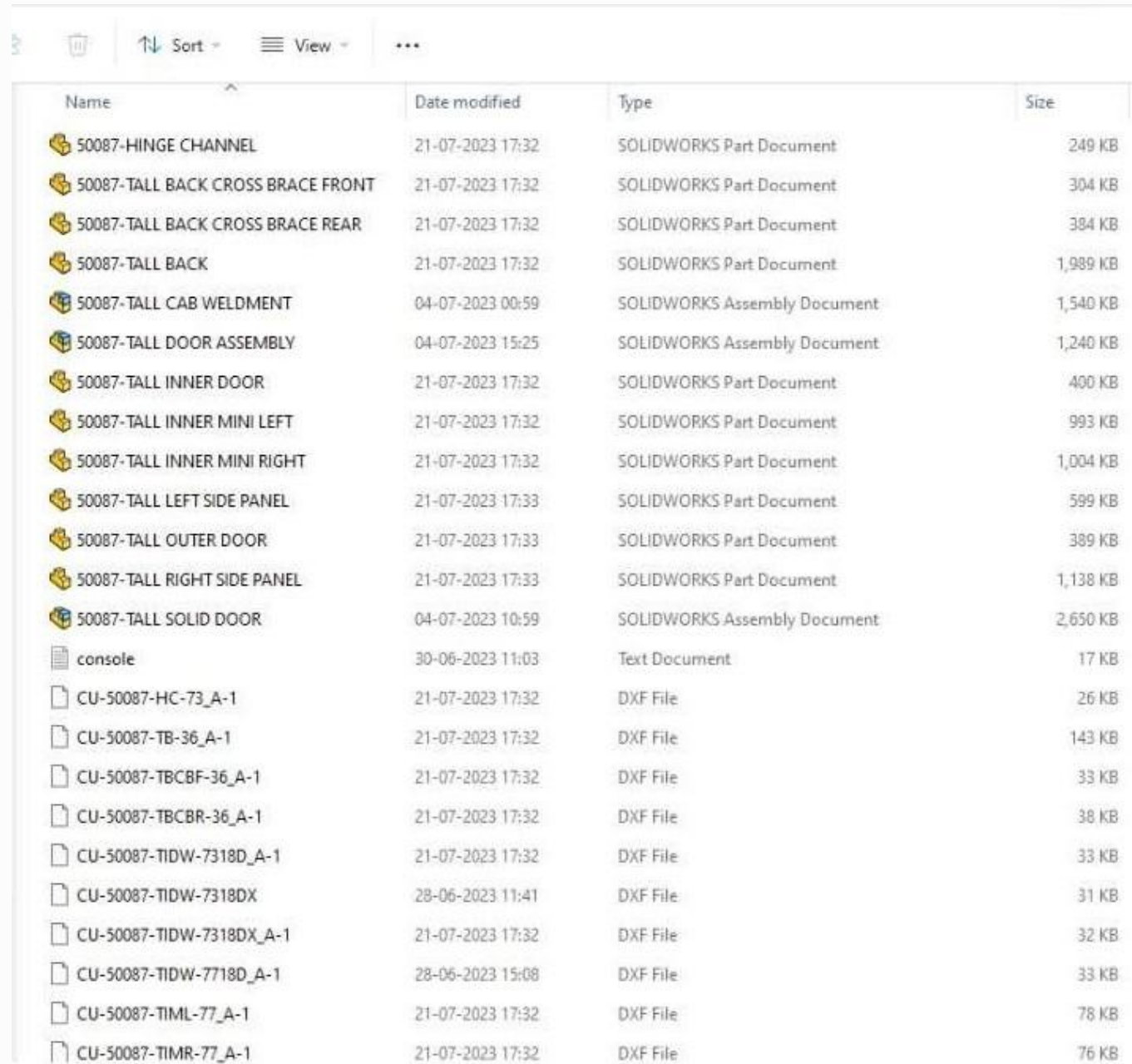


Using Our Configurator



2 – 5 Minutes  
Per Workbench

# Sample Documents which we provide to our clients



Name	Date modified	Type	Size
50087-HINGE CHANNEL	21-07-2023 17:32	SOLIDWORKS Part Document	249 KB
50087-TALL BACK CROSS BRACE FRONT	21-07-2023 17:32	SOLIDWORKS Part Document	304 KB
50087-TALL BACK CROSS BRACE REAR	21-07-2023 17:32	SOLIDWORKS Part Document	384 KB
50087-TALL BACK	21-07-2023 17:32	SOLIDWORKS Part Document	1,989 KB
50087-TALL CAB WELDMENT	04-07-2023 00:59	SOLIDWORKS Assembly Document	1,540 KB
50087-TALL DOOR ASSEMBLY	04-07-2023 15:25	SOLIDWORKS Assembly Document	1,240 KB
50087-TALL INNER DOOR	21-07-2023 17:32	SOLIDWORKS Part Document	400 KB
50087-TALL INNER MINI LEFT	21-07-2023 17:32	SOLIDWORKS Part Document	993 KB
50087-TALL INNER MINI RIGHT	21-07-2023 17:32	SOLIDWORKS Part Document	1,004 KB
50087-TALL LEFT SIDE PANEL	21-07-2023 17:33	SOLIDWORKS Part Document	599 KB
50087-TALL OUTER DOOR	21-07-2023 17:33	SOLIDWORKS Part Document	389 KB
50087-TALL RIGHT SIDE PANEL	21-07-2023 17:33	SOLIDWORKS Part Document	1,138 KB
50087-TALL SOLID DOOR	04-07-2023 10:59	SOLIDWORKS Assembly Document	2,650 KB
console	30-06-2023 11:03	Text Document	17 KB
CU-50087-HC-73_A-1	21-07-2023 17:32	DXF File	26 KB
CU-50087-TB-36_A-1	21-07-2023 17:32	DXF File	143 KB
CU-50087-TBCBF-36_A-1	21-07-2023 17:32	DXF File	33 KB
CU-50087-TBCBR-36_A-1	21-07-2023 17:32	DXF File	38 KB
CU-50087-TIDW-7318D_A-1	21-07-2023 17:32	DXF File	33 KB
CU-50087-TIDW-7318DX	28-06-2023 11:41	DXF File	31 KB
CU-50087-TIDW-7318DX_A-1	21-07-2023 17:32	DXF File	32 KB
CU-50087-TIDW-7718D_A-1	28-06-2023 15:08	DXF File	33 KB
CU-50087-TIML-77_A-1	21-07-2023 17:32	DXF File	78 KB
CU-50087-TIMR-77_A-1	21-07-2023 17:32	DXF File	76 KB

- Drawing PDF
- DXF Files
- Step Files
- Production BOM
- Production Packet
- SolidWorks Drawing
- SolidWorks Models



# Types of Furniture

## Industrial Furniture

- Industrial Work Bench
- ESD Work Bench
- IT/LAN Work Bench
- Custom Industrial Work Bench
- Stainless Steel Base cabinet
- Stainless Steel Sink Cabinet
- Stainless Steel Wall Cabinet
- Welding Table
- Industrial Storage

## Lab Furniture

- Lab Tables
- Lab Casework
- Stainless Steel  
Countertops
- Shelves
- Steel Cabinets
- Fume Hoods

## Commercial Furniture

- Commercial Cabinets
- Commercial Countertops
- Commercial Kitchen
- Office Desks
- Stainless Steel casework for  
classroom
- Demountable wall System

We are willing to explore new avenues in the sheet metal furniture industry, so please inform us if you have any other custom requirements.




# THANK YOU!



 +91 84602 55923

 [contact@immersivtech.com](mailto:contact@immersivtech.com)

 B-418, Monarch, Gaurav Path, Pal  
Surat, Gujarat

